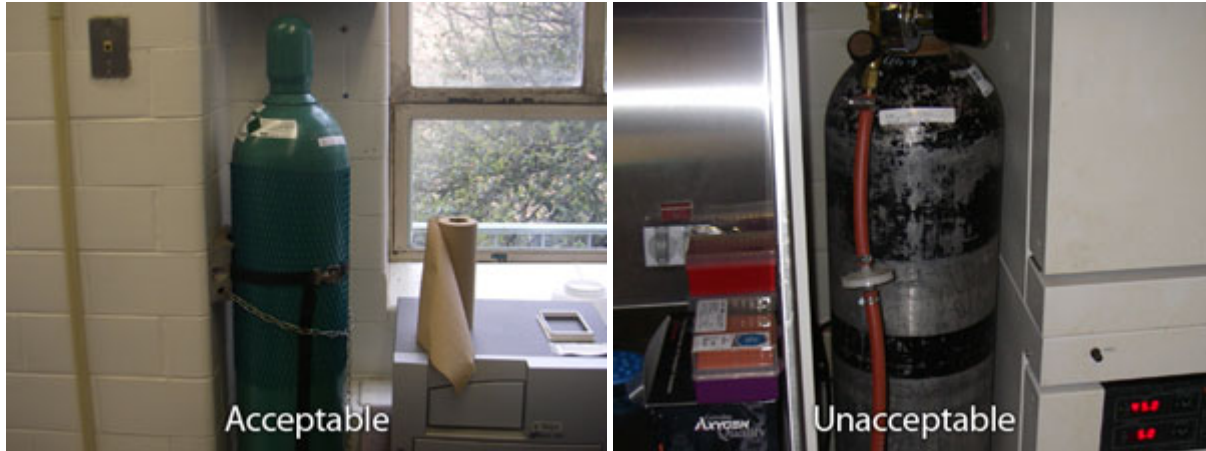


Guide for Lab Compliance with NFPA 45

Compressed gas cylinder unsecured or improperly secured.

All compressed gas cylinders must be secured by a chain or strap to a stationary object. The chain/strap needs to be tight so that the cylinder cannot move. They must also not be located directly at the entrance of the lab. The cylinder in the picture below is properly secured.



Container Labeling Issues

The waste container in the picture below is labeled correctly. It has a waste tag attached showing the chemical contents. All chemical containers waste or not, need to be labeled with the chemical contents. Waste containers also need the waste tag attached. If a chemical is transferred into another container, that label needs to be de-faced and the correct contents need to be indicated. The large container without a tag in the picture below is not within compliance



Note:

- Sprinkler system heads cannot be blocked by storage within the building in any area.
- Storage is required by fire code to be kept (18 inches) below a sprinkler head.

Fume hood sash open and left unattended or cluttered

Fume hood sashes should be pulled down as much as possible. Objects within the fume hood should not protrude outward preventing the closing of the fume hood. Fume hood interior space should not be cluttered with unnecessary items.



Doors propped open.

Doors are not allowed by fire code to be propped open. Wedges or other types of equipment should not be used to prop open doors from laboratories.



Extension cords used as permanent wiring. Power cords connected in series.

Extension cords and/or power strips are not designed to be used in place of hard wired electrical circuits. Power strips cannot be used as a continuation or "string" of electrical supply for equipment.



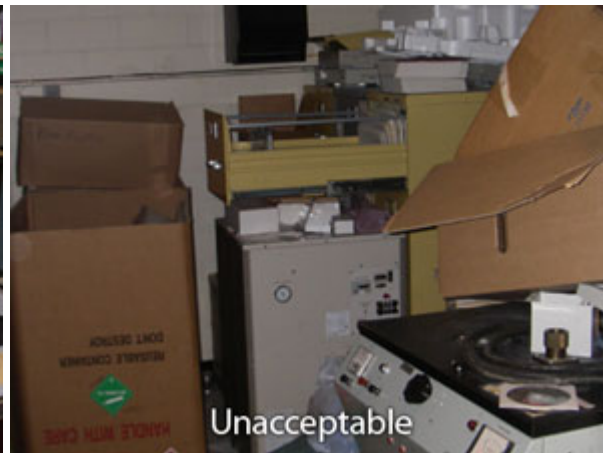
Excessive Storage of Chemicals

There should not be excessive storage of chemicals, especially flammable chemicals. Flammable chemicals should be stored in a flammables cabinet. The picture below is an example of an acceptable flammable storage cabinet for the storage of flammable chemicals.



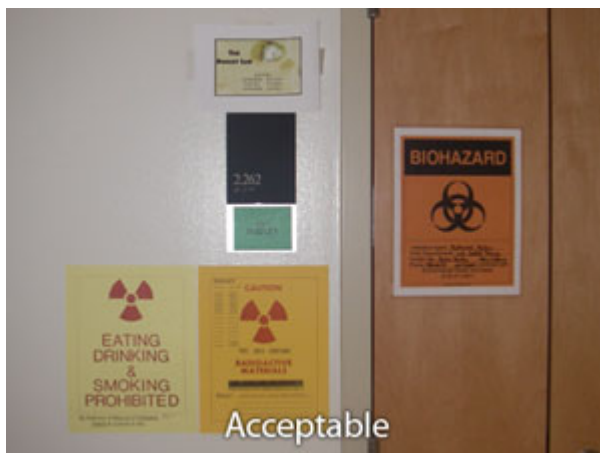
Clutter/Poor Housekeeping

Labs should be free of clutter. An established walkway should be clear for prompt egress if necessary. Excessive storage of boxes, supplies, and equipment should be kept to a minimum.



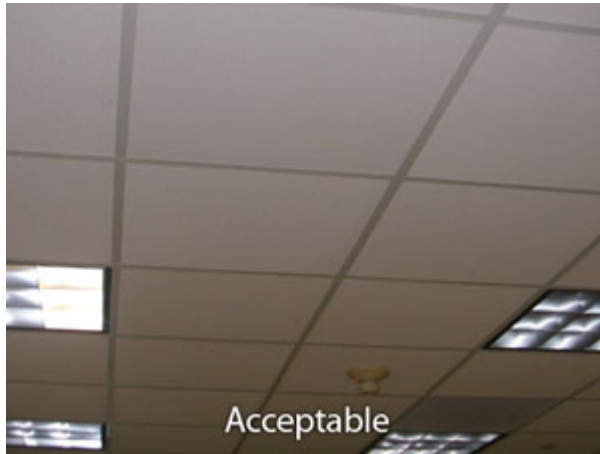
Signs and Labels on Doors

Labels and signs on doors need to be current and accurate. The NFPA diamond shown below is not used at the University anymore and should not be on doors. Signs that can be used on doors are Laser signs, Radioactive Material Use signs, BSL2 signs, etc. as long as they are actually accurate for the hazards in the room. The signs shown below are within compliance.



Missing Ceiling Tiles and Other Penetrations in Ceiling/Wall

Ceiling tiles are required by fire code to remain in place. The area walls, ceilings, and floors should not have penetrations in them.



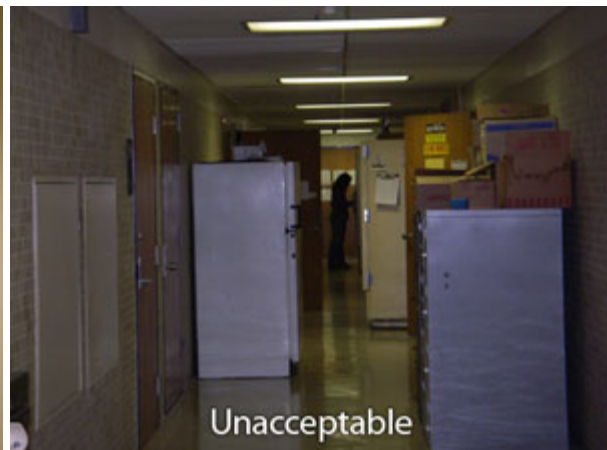
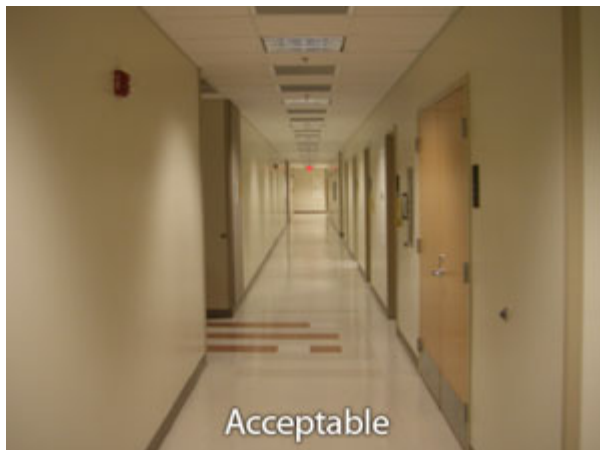
Dispensing of Chemicals inside a Building

Chemical dispensing should be limited to small containers as much as practicable. The dispensing of large volumes of chemicals from drums should be performed out of doors.



Storage in Corridors

Building corridors should be kept clear. Equipment, desks, tables and chairs cannot be placed in building corridors. The obstruction of a corridor or egress access hallway is not allowed by fire code.



Storage of Propane and other Similar Liquefied Flammable Gas

These liquefied flammable gases, e.g., Propane should not be stored inside a building other than small cylinders (14.1 oz.). They can be used inside if necessary for brief periods of time, but then should be moved outside to a permanent storage location. These cylinders are usually bigger around and also shorter than normal gas cylinders.



Fire Extinguishers

Fire extinguishers should be mounted to the wall (4 inches) above the floor for quick use if necessary. Equipment, lab supplies, or furniture cannot be placed in front of fire extinguishers.



Electrical Panels

Building electrical panels cannot be blocked with equipment, lab supplies or furniture. Electrical panel doors are required by fire code to be kept shut. Only authorized and qualified personnel should have access to building electrical panels.

